

# MONTHLY MEMBERSHIP PROGRESS REPORT

LOCATION ENGLAND

District 105SW

Results as of: 1/31/2023

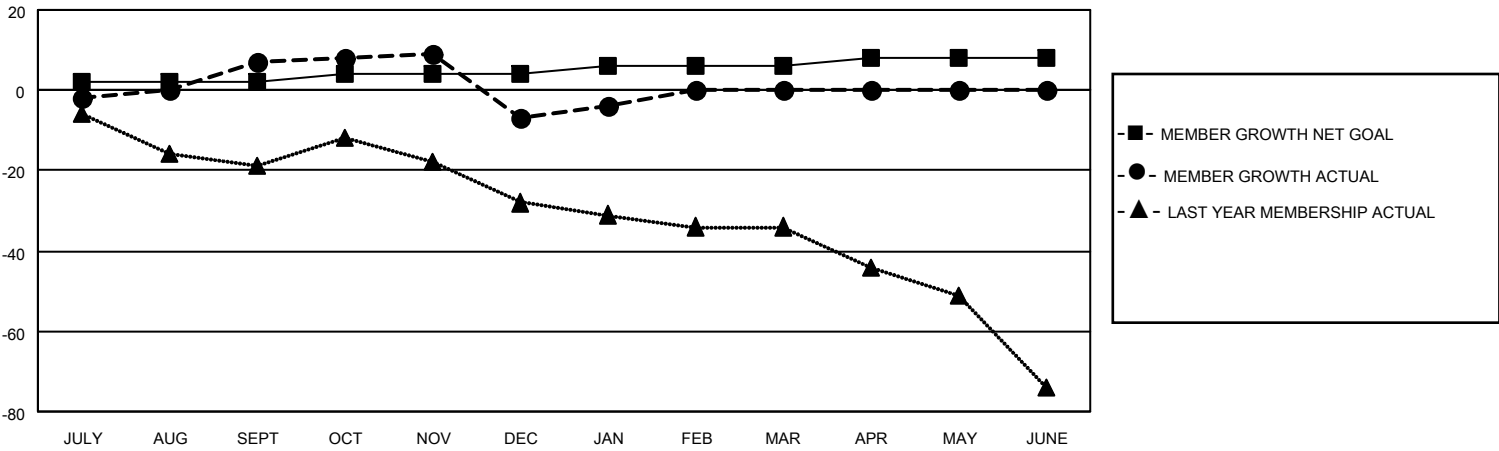
Clubs			
RESULTS FOR 2022-2023			
QUARTER	NEW CLUB GOAL	NEW CLUBS	DROPPED CLUBS
JULY/AUG/SEPT	0	0	1
OCT/NOV/DEC	1	0	0
JAN/FEB/MAR	0	0	0
APR/MAY/JUNE	1	0	0

Members			
RESULTS FOR 2022-2023			
QUARTER	MEMBER GROWTH NET GOAL	MEMBER GROWTH ACTUAL	DROPPED MEMBERS ACTUAL (including transfers)
JULY/AUG/SEPT	2	38	24
OCT/NOV/DEC	2	25	39
JAN/FEB/MAR	2	12	6
APR/MAY/JUNE	2	0	0

**GOALS AND ACTUAL NEW CLUBS CUMULATIVE**



**GOALS AND ACTUAL MEMBERS CUMULATIVE**



DROPPED CLUBS: 1	
<u>DROPPED MEMBERS</u>	
DECEASED	17
CLUB CANCELLED	0
OTHER	52
<b>TOTAL</b>	<b>69</b>

30 CLUBS OF 58 ADDED 1 OR MORE NEW MEMBERS

[CLICK HERE FOR CUMULATIVE MEMBERSHIP DATA](#)

<u>GENDER DISTRIBUTION</u>	
MALE	733 (71.23%)
FEMALE	296 (28.77%)
NON BINARY	0 (0.00%)
PREFER NOT TO ANSWER	0 (0.00%)
<b>TOTAL FAMILY UNIT MEMBERS</b>	<b>124</b>
<b>FAMILY MEMBERS PAYING HALF DUES</b>	<b>63</b>